

1 FRONT ELEVATION
1/4" = 1'-0"

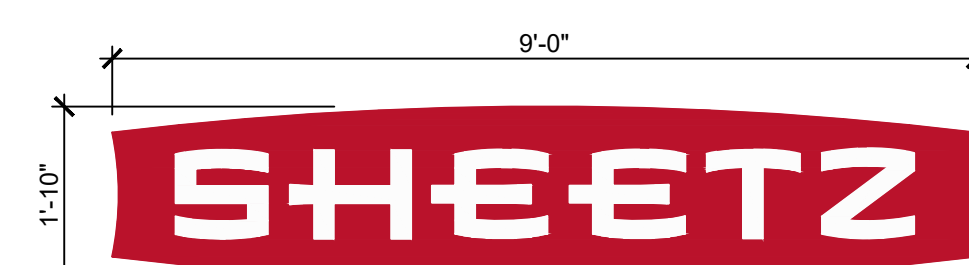
- TYPICAL EXTERIOR ELEVATION NOTES:**
- ALL LIGHTS SHOWN ABOVE AND/OR BELOW DOORS OR WINDOWS ARE TO BE CENTERED ON THE DOOR OR WINDOW UNLESS NOTED OTHERWISE.
 - FIXTURES/EQUIPMENT BETWEEN TWO DOORS OR WINDOWS ARE TO BE CENTERED EQUALLY.
 - EXTERIOR SEALANT FOR STONE SHALL COMPLY WITH SECTION 07 9005 JOINT SEALANTS. GENERAL BUILDING FASCIADE WEATHER SEALANT AND SHALL MATCH THE COLOR OF THE STORE.

EXTERIOR ELEVATION KEYNOTES:

- BRICK VENEER, COLOR: 680 BY CONTINENTAL BRICK COMPANY. SEE MASONRY SPEC
- CAST STONE SILL, COLOR: CRAB ORCHARD. SEE MASONRY SPEC
- ANCHORED CAST STONE MASONRY VENEER, COLOR: CRAB ORCHARD. SEE MASONRY SPEC
- EXTERIOR LIGHT FIXTURE, REFER TO ELECTRICAL DRAWINGS
- ARCHITECTURAL CANOPY, COLOR: REGAL RED, PREMIUM TWO-COAT KYMAR FINISH
- BRICK PAVER WALKWAY
- LIGHTED CURVED FASCIA CANOPY ATTACHMENT
- METAL COPING, COLOR: DARK BRONZE
- WALL MOUNTED BUILDING SIGN, SEE SHEET A200.
- STANDING SEAM METAL ROOF, COLOR: BRITE RED
- MANSARD ROOF COLOR: DARK BRONZE
- GUTTER, COLOR TO MATCH CUPOLA COLOR
- DOWNSPOUT, COLOR: DARK BRONZE
- DRIVE-THRU WINDOW (IF APPLICABLE)
- METAL STANDING SEAM SHED STYLE AWNING AND FRAME ASSEMBLY, ROOF COLOR: BRITE RED, FRAME COLOR: DARK BRONZE
- BRICK SOLDIER COURSE, COLOR: 680 BY CONTINENTAL BRICK COMPANY. SEE MASONRY SPEC
- BRICK ROWLOCK COURSE, COLOR: 680 BY CONTINENTAL BRICK COMPANY. SEE MASONRY SPEC
- CONTROL JOINT, SEE MASONRY SPEC
- STEEL ROOF LADDER AND CRANKY POST, COLOR: DARK BRONZE
- STANDARD THROUGH WALL SCUPPER WITH CONDUCTOR HEAD & DOWNSPOUT, COLOR: DARK BRONZE
- OVERFLOW SCUPPER
- ALUMINUM STOREFRONT SYSTEM, SEE A600
- EXTERIOR HOSE BIB, REFER TO PLUMBING DRAWINGS
- OUTDOOR FURNITURE
- ELECTRICAL RECEPTACLE, REFER TO ELECTRICAL DRAWINGS
- ELECTRICAL EQUIPMENT, REFER TO ELECTRICAL DRAWINGS
- HM DOOR AND FRAME, COLOR: DARK BRONZE
- EMERGENCY WATER CONNECTION, REFER TO PLUMBING DRAWINGS
- SEAMLESS ALUM PANEL SYSTEM WITH EXPOSED FASTENERS, COLOR: DARK BRONZE
- PROPANE LOCKER
- ICE MERCHANDISER
- RTI FILLPORT
- STEEL BOLLARD, COLOR: DARK BRONZE
- CO2 FILLPORT
- DECORATIVE ALUMINUM FENCE, COLOR DARK BRONZE
- AUTOMATIC DOOR PUSH PLATE AND BOLLARD, BOLLARD COLOR: DARK BRONZE
- GAS METER AND RISER, REFER TO CIVIL UTILITY PLAN, COLOR: DARK BRONZE
- MTO GRAPHIC DECAL, SEE SHEET A200.
- LIGHT CHANNEL AT PARAPET COPING, SEE ARCHITECTURAL AND ELECTRICAL DRAWINGS FOR MORE INFORMATION.

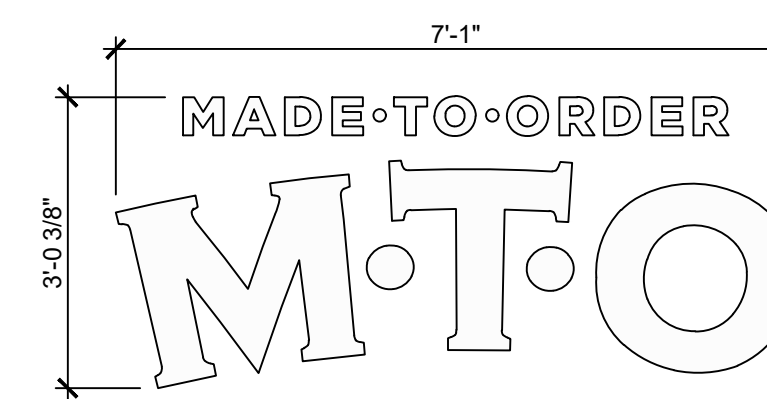


2 LEFT ELEVATION
1/4" = 1'-0"



OUTLINE AREA = 14.84 SQ. FT.
BOX AREA = 16.52 SQ. FT.
TYPICAL OF THREE
PROJECTS 7" OFF FACE OF BUILDING

A WALL MOUNTED "SHEETZ" BUILDING SIGN
1/2" = 1'-0"



OUTLINE AREA = 8.38 SQ. FT.
BOX AREA = 21.47 SQ. FT.
TYPICAL OF ONE
PROJECTS 0" OFF FACE OF BUILDING

B WALL MOUNTED "MTO" DECAL
1/2" = 1'-0"

PROJECT NAME:
**NEW SHEETZ STORE
HIGHLAND
MILFORD**

Int. of Milford Road
and Highland Road
Highland
Michigan

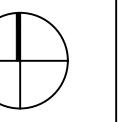
OWNER:
SHEETZ, INC.

5700 SIXTH AVE.
ALTOONA, PA 16602

CONSULTANT

PROFESSIONAL

KEYPLAN

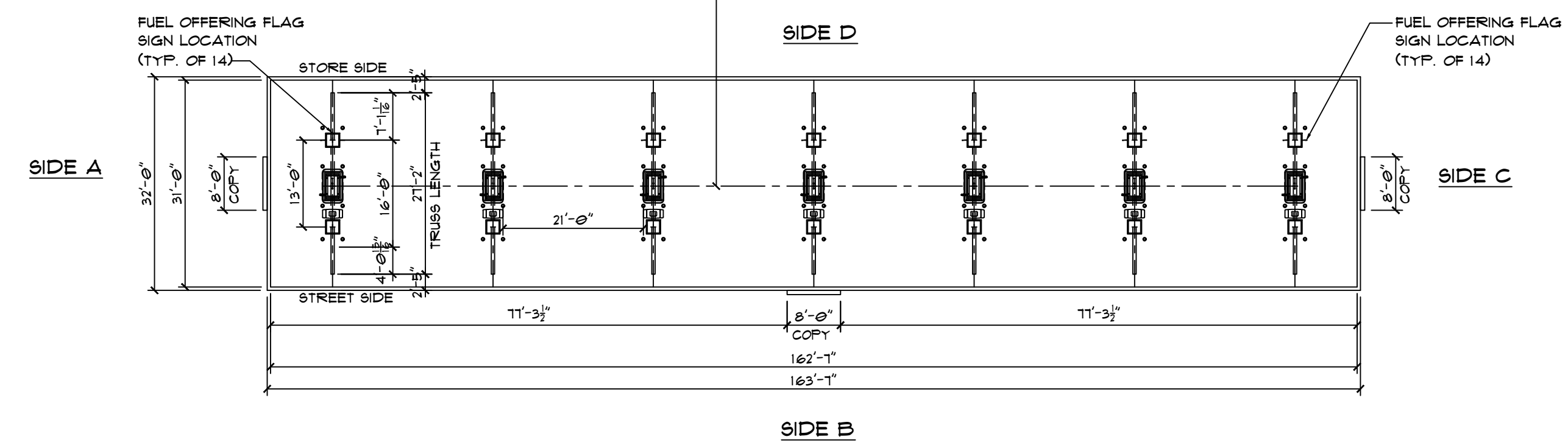
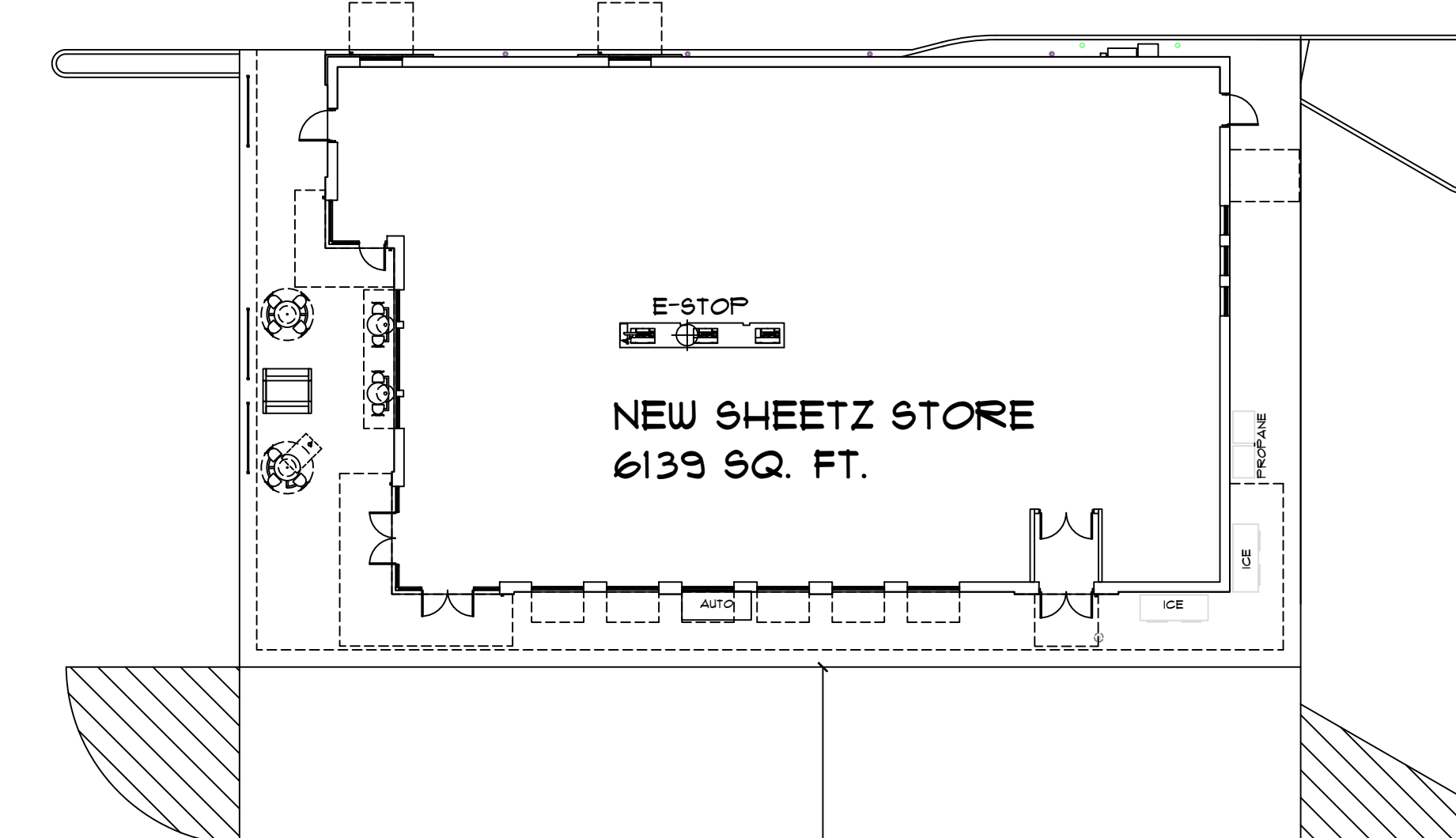
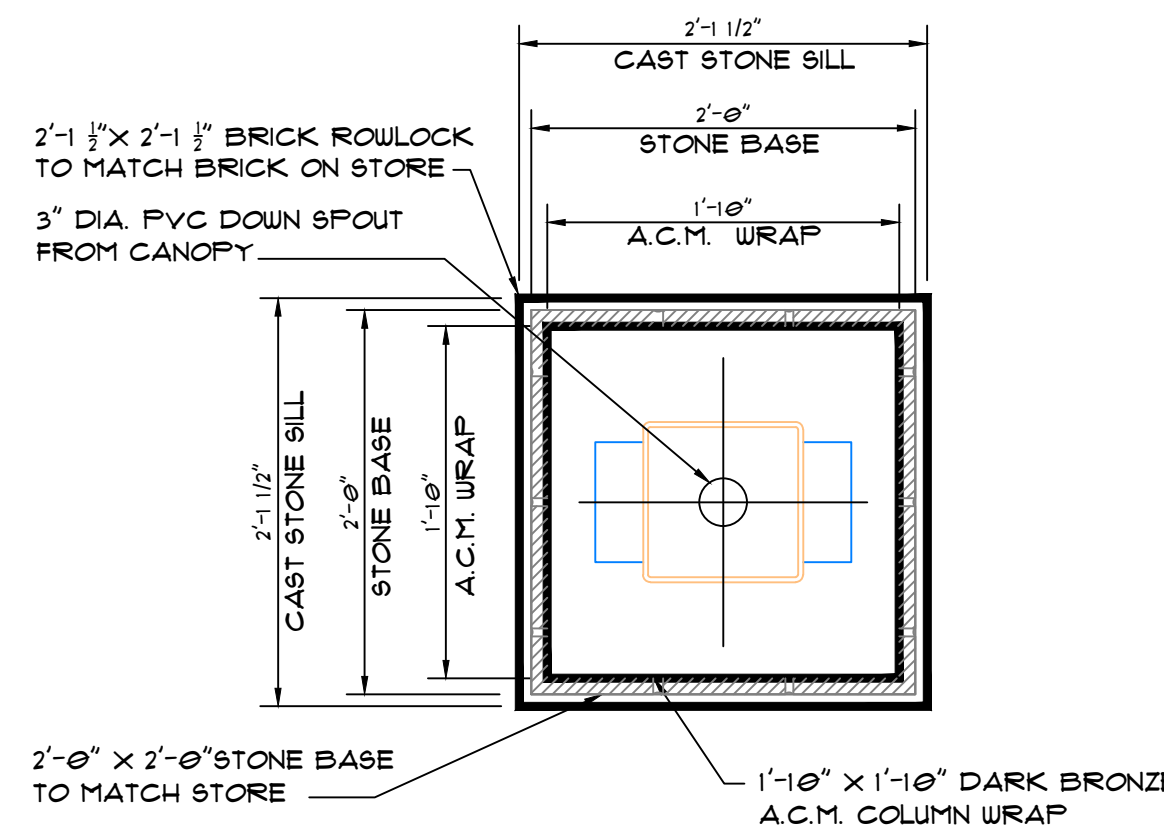
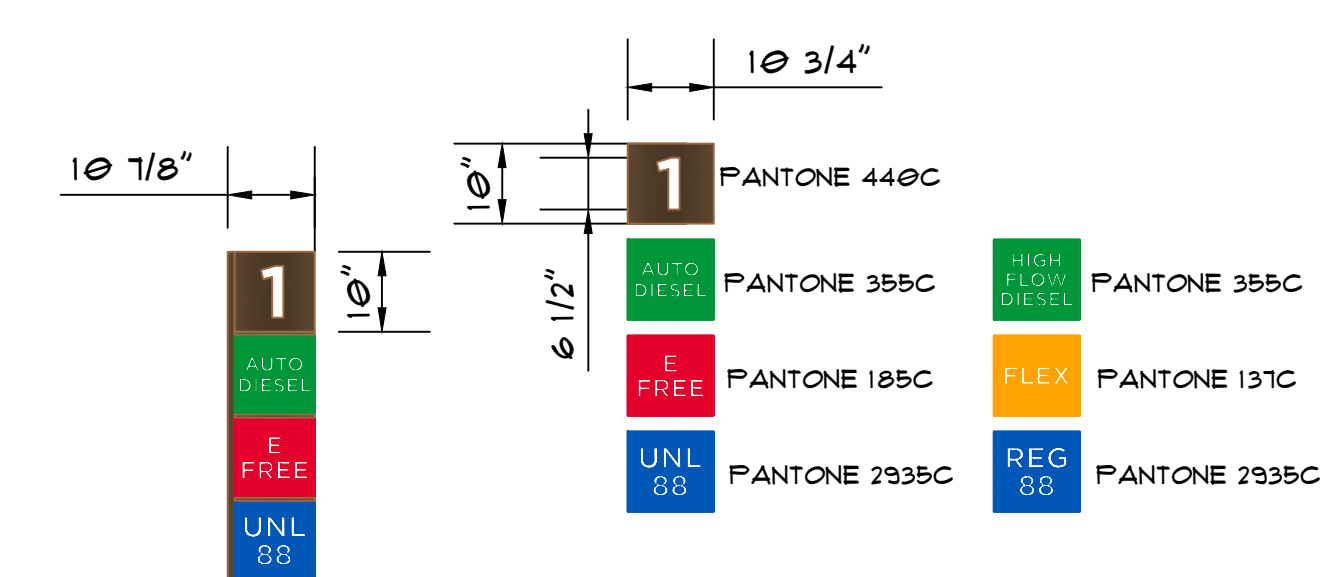
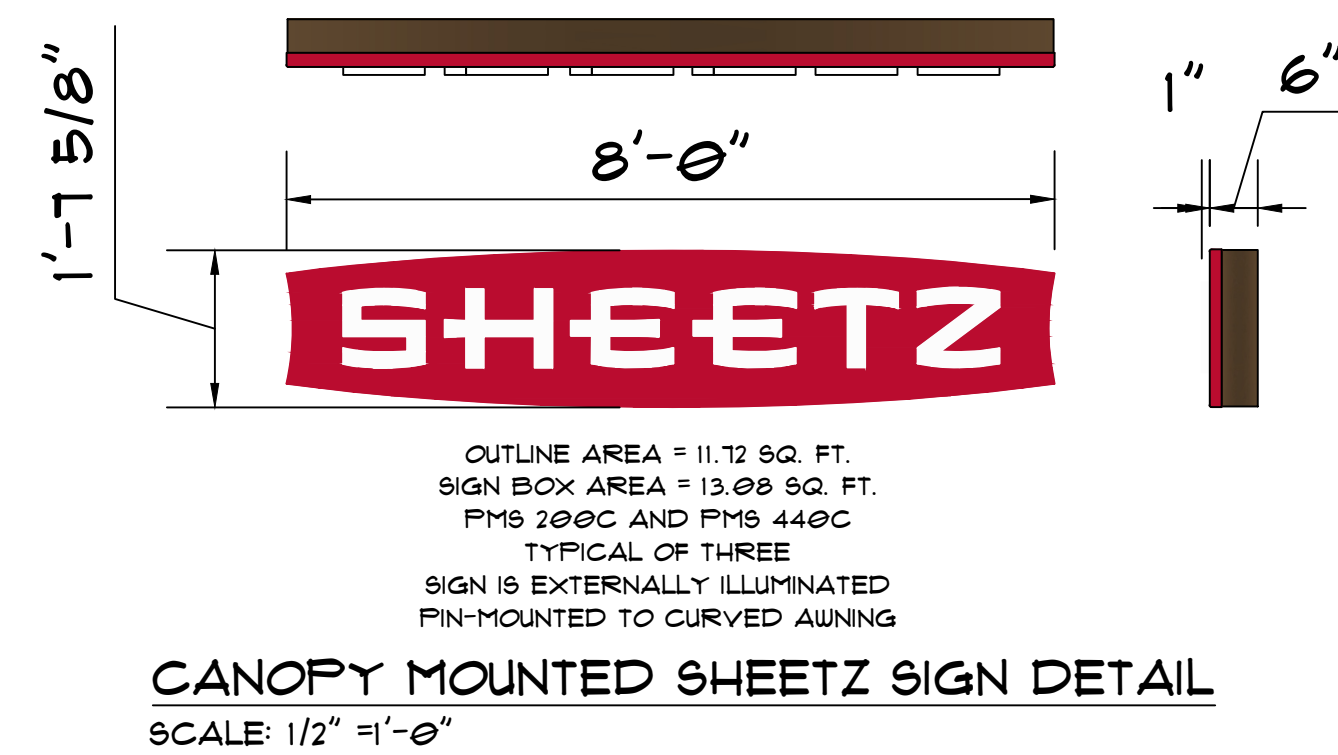
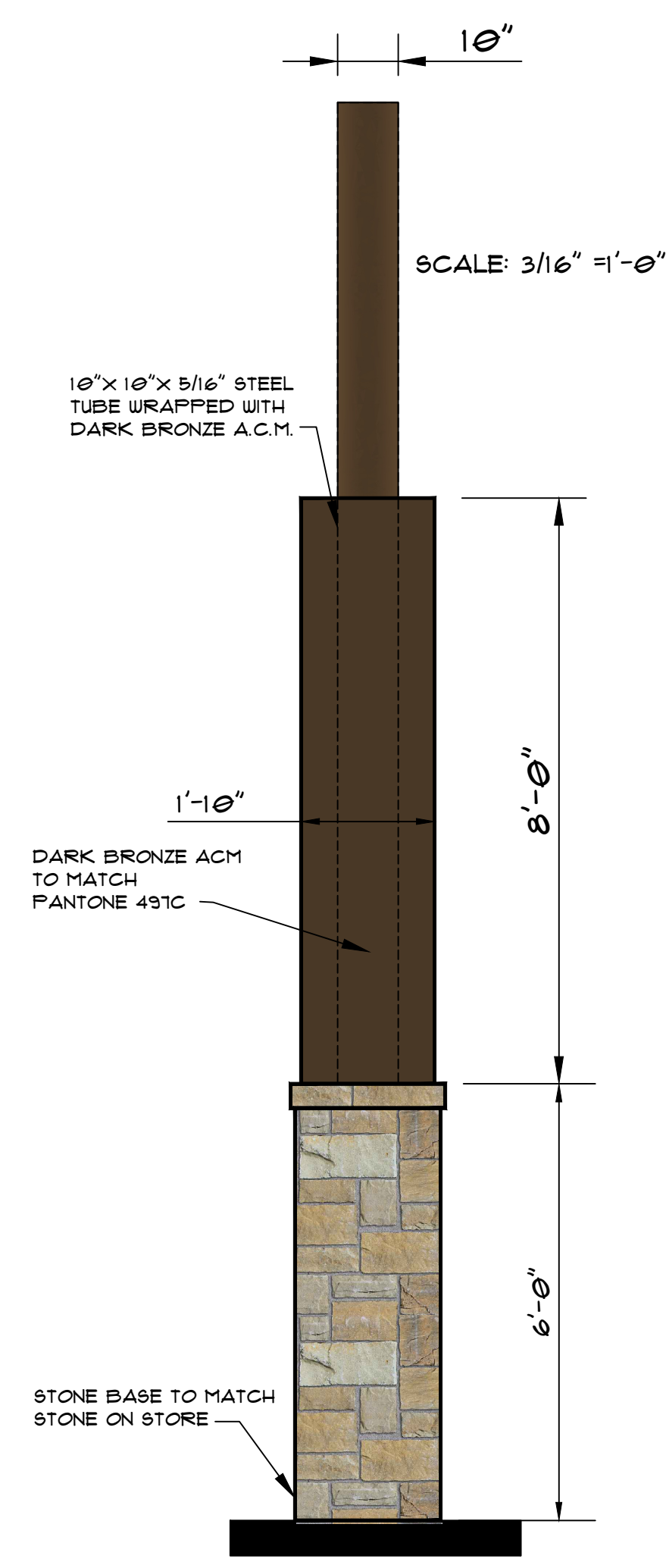
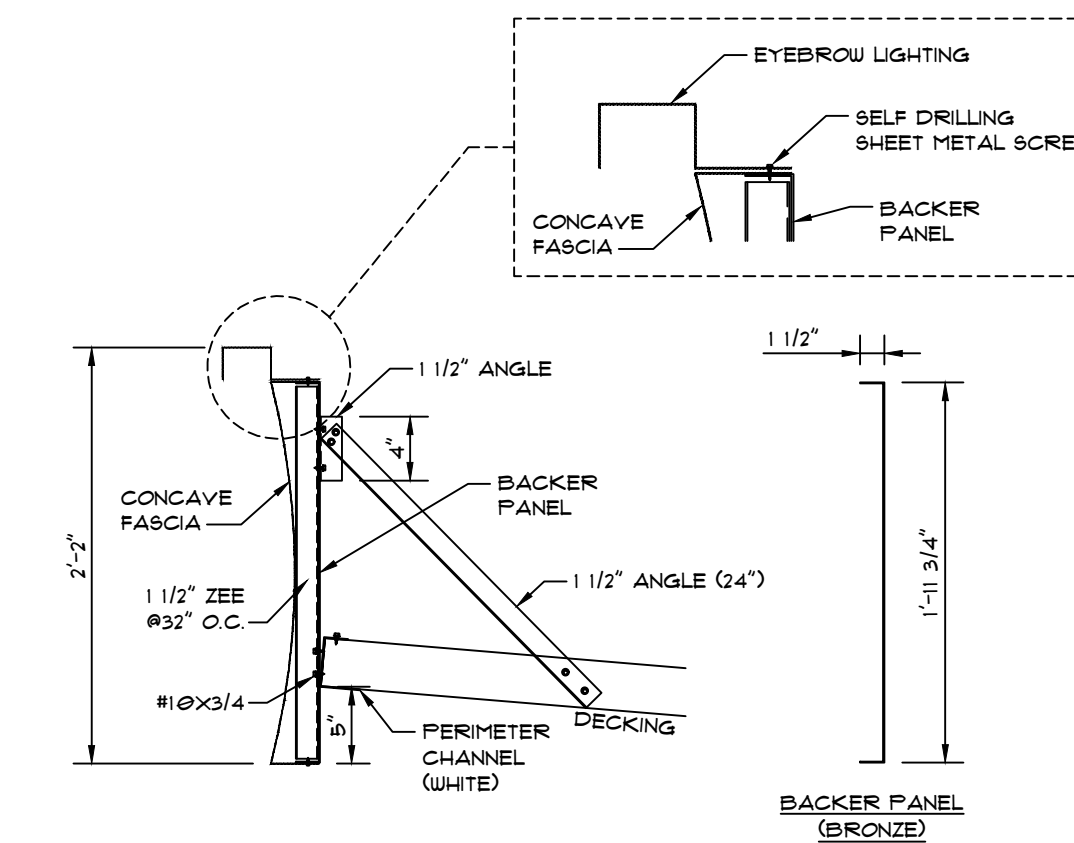
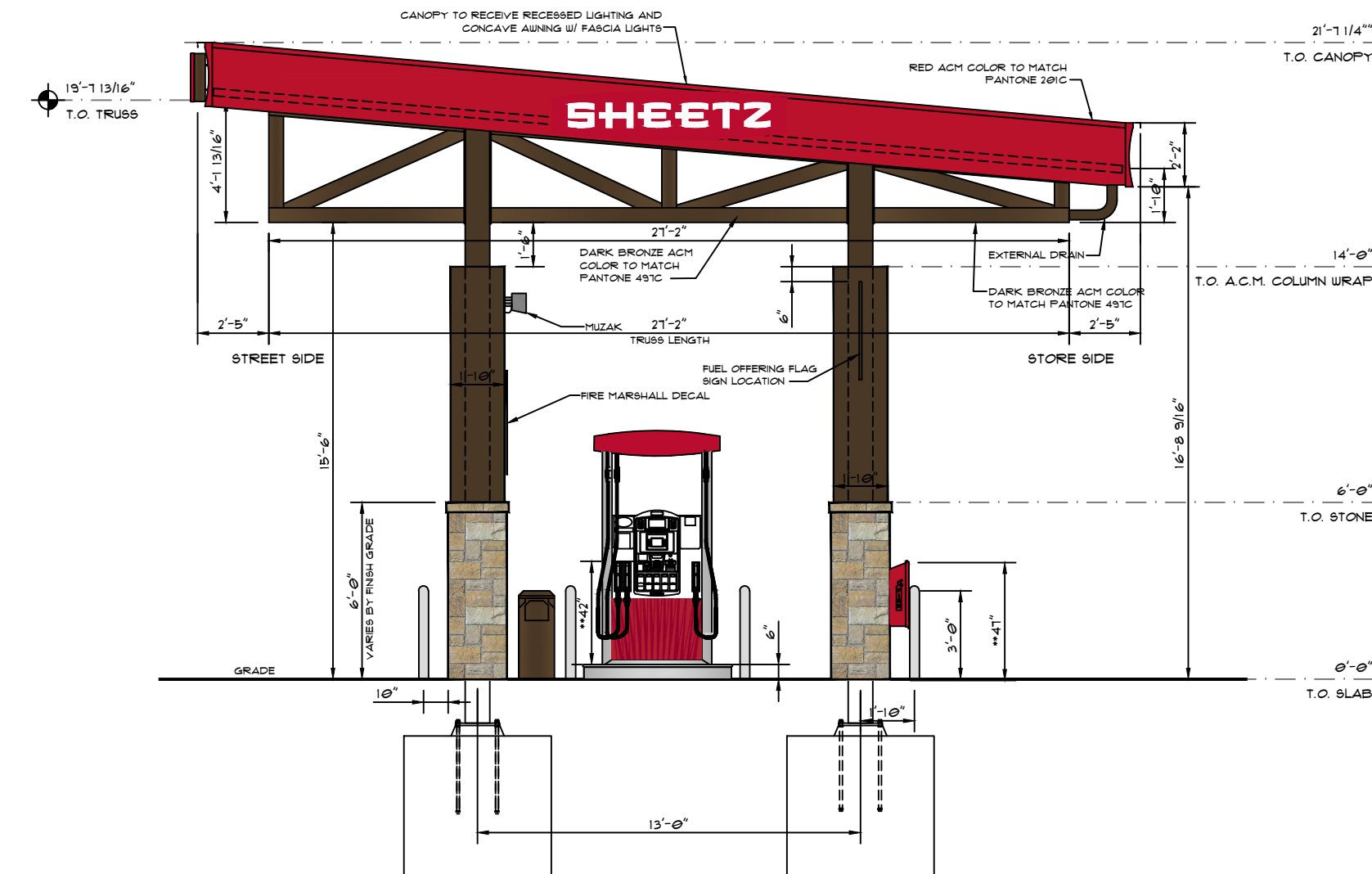
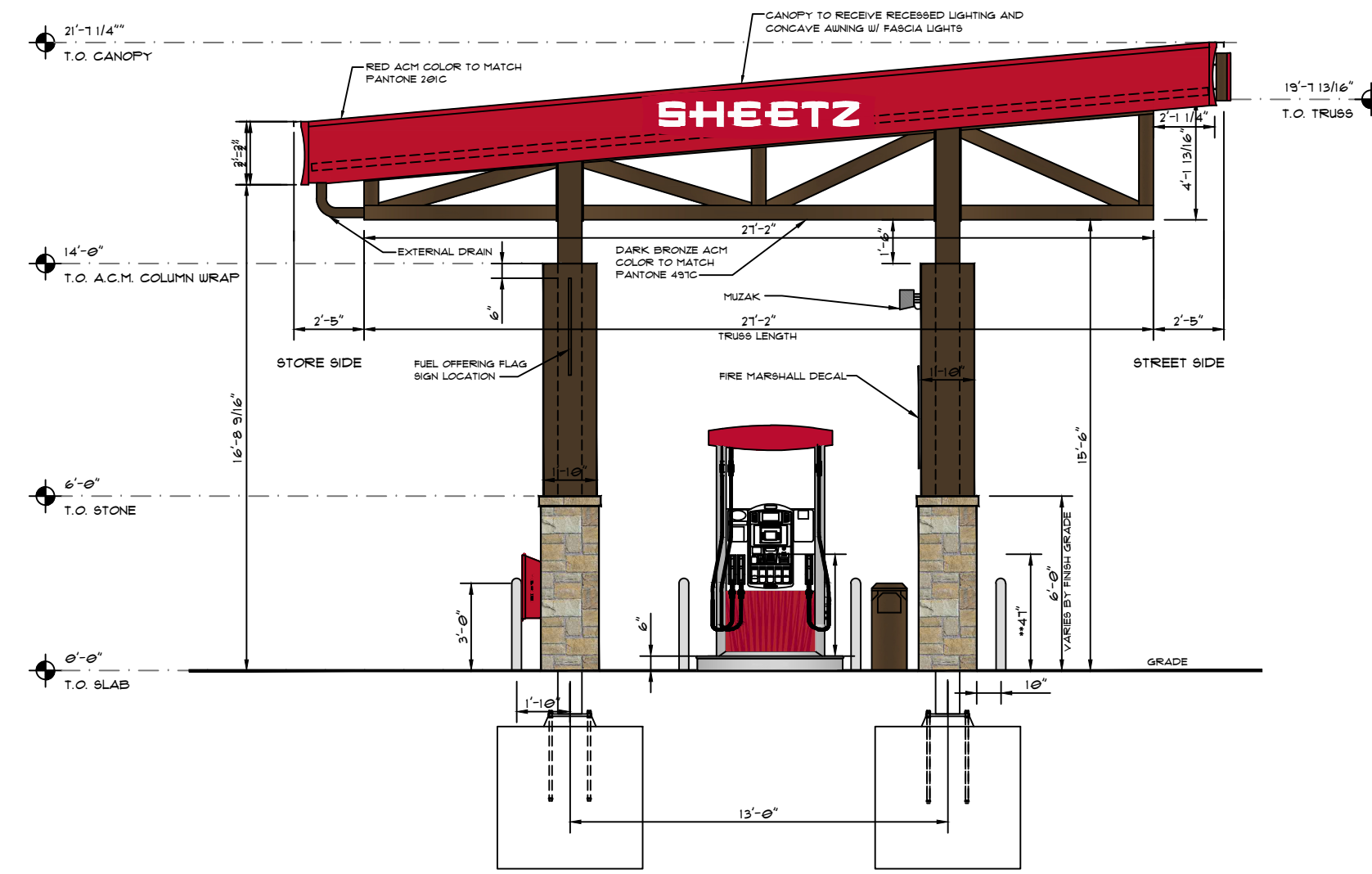
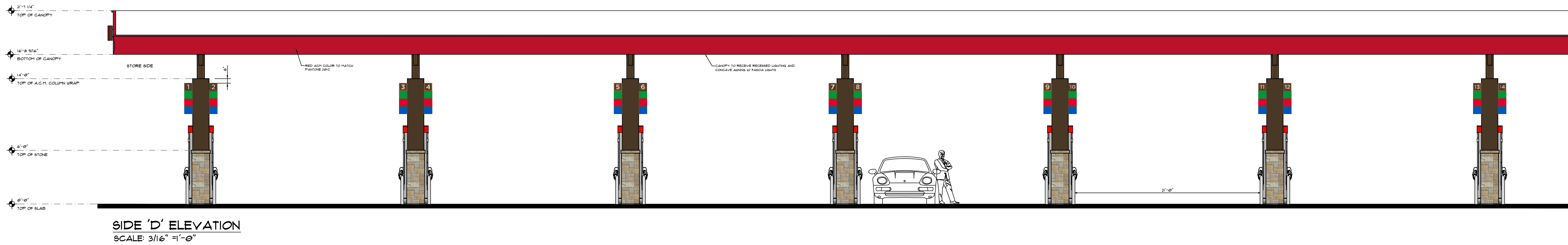
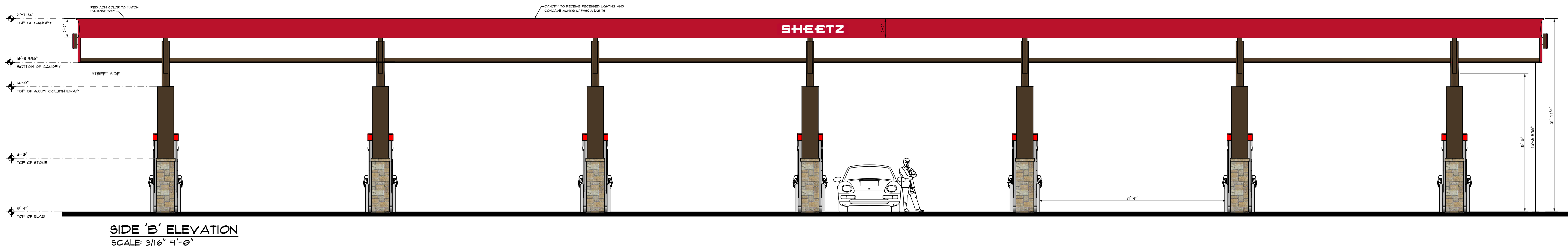


MARK	DATE	DESCRIPTION
NML 12-19-24		UPDATED PER CURRENT SITE PLAN
DNC 10/07/24		UPDATED PER CURRENT SITE PLAN

ISSUE: **08-01-24**
PROJECT NO:
AUTHOR BY: DNC
REVIEW BY:
SHEET TITLE

GAS AWNING

A102



PLAN VIEW FOR LOGO LOCATIONS



SHEETZ, INCORPORATED
 5100 SIXTH AVENUE
 ALTOONA, PA 16602
 (814) 946-3611

NEW SHEETZ STORE "HIGHLAND"

INT. OF MILFORD ROAD
 AND HIGHLAND ROAD
 HIGHLAND, MICHIGAN

SIGNAGE SQUARE FOOTAGE BREAKDOWN

BUILDING ELEVATIONS

SHEETZ SIGN = 16.55 SQ. FT. X 2 = 33.10 SQ. FT.
 MTO VINYL GRAPHIC = 21.44 SQ. FT. X 1 = 21.44 SQ. FT.
 TOTAL = 54.54 SQ. FT. 54.54 SQ. FT.

GAS PRICE POLE SIGN

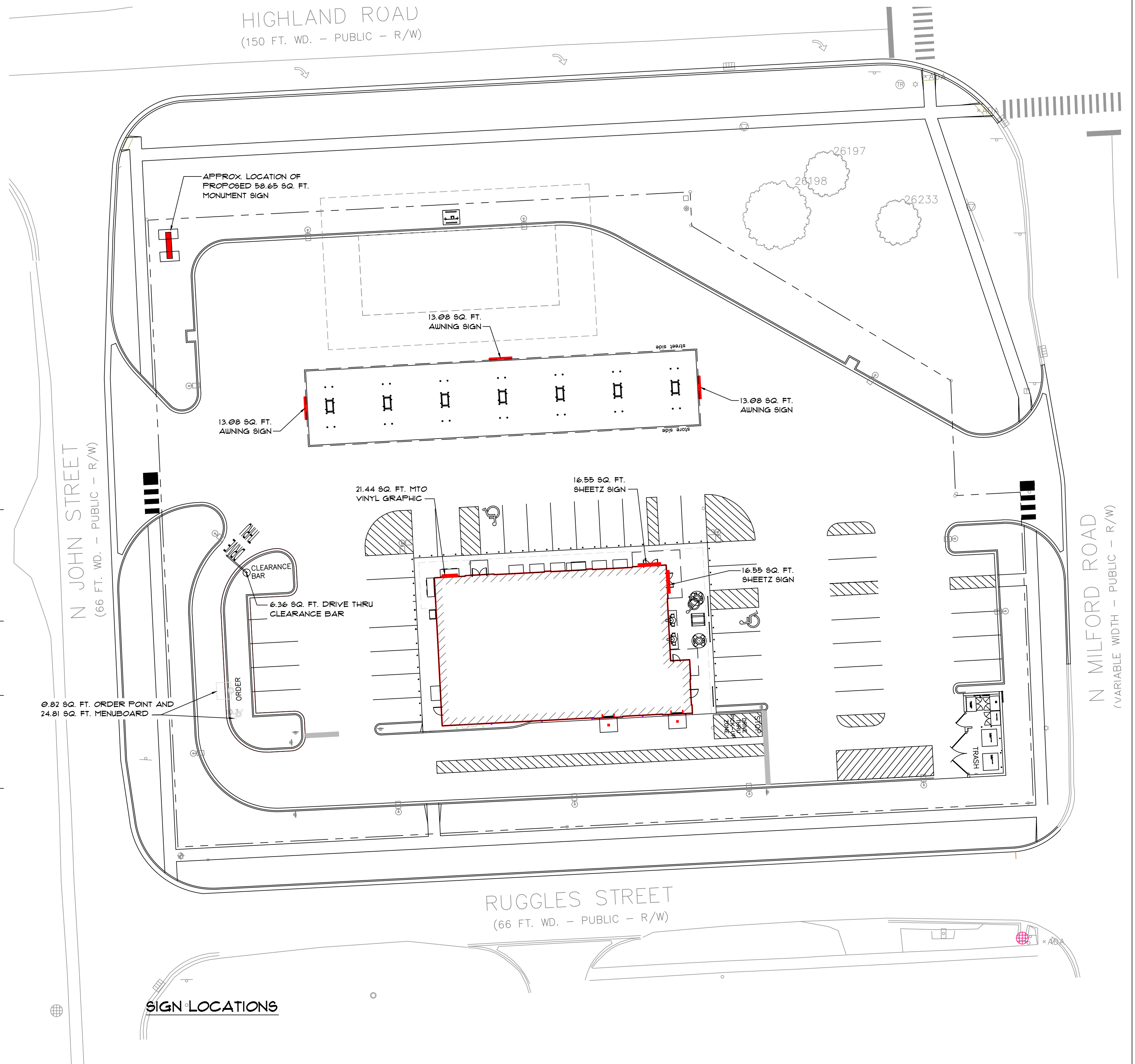
SHEETZ SIGN = 20.44 SQ. FT. X 1 = 20.44 SQ. FT.
 GAS PRICE SIGN = 19.02 SQ. FT. X 1 = 19.02 SQ. FT.
 INFORMATIONAL SIGN = 17.42 SQ. FT. X 1 = 17.42 SQ. FT.
 CITY SEAL = 1.71 SQ. FT. X 1 = 1.71 SQ. FT.
 TOTAL = 58.65 SQ. FT. 58.65 SQ. FT.

GAS CANOPY AWNING

SHEETZ SIGN AREA = 13.08 SQ. FT. X 3 = 39.24 SQ. FT.
 FUEL OFFERING FLAG AREA = 2.76 SQ. FT. X 14 = 38.64 SQ. FT.
 TOTAL = 77.88 SQ. FT. 77.88 SQ. FT.

DRIVE THRU SIGN DETAILS

CLEARANCE BAR = 6.36 SQ. FT. X 1 = 6.36 SQ. FT.
 ORDER POINT SIGNS = 0.41 SQ. FT. X 2 = 0.82 SQ. FT.
 MENUBOARD = 24.81 SQ. FT. X 1 = 24.81 SQ. FT.
 TOTAL = 31.99 SQ. FT. 31.99 SQ. FT.



HIGHLAND MILFORD

Int. of Milford Road
and Highland Road
Highland
Michigan

OWNER:
SHEETZ, INC.

5700 SIXTH AVE.
ALTOONA, PA 16602

CONSULTANT

PROFESSIONAL

KEYPLAN

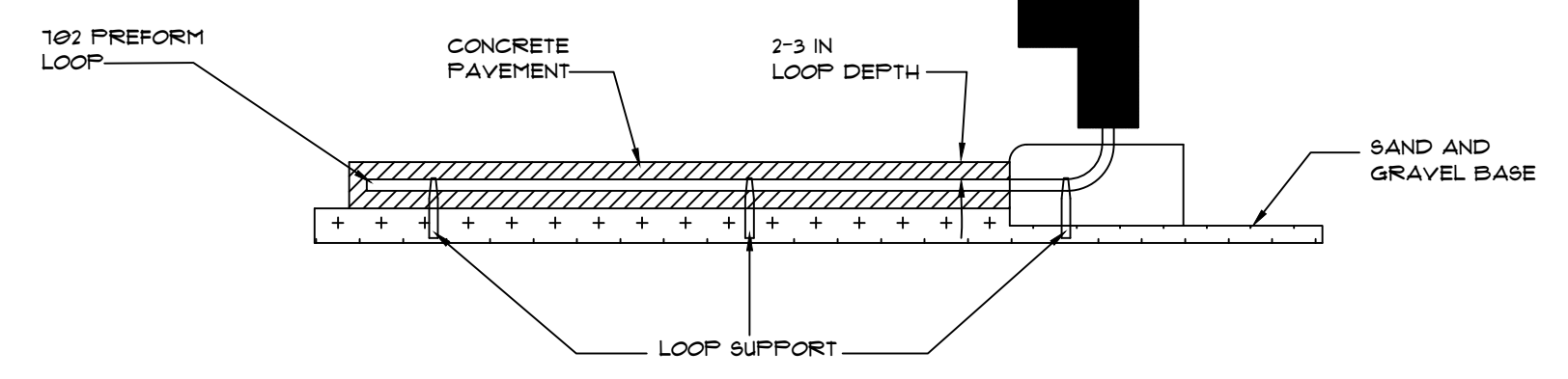
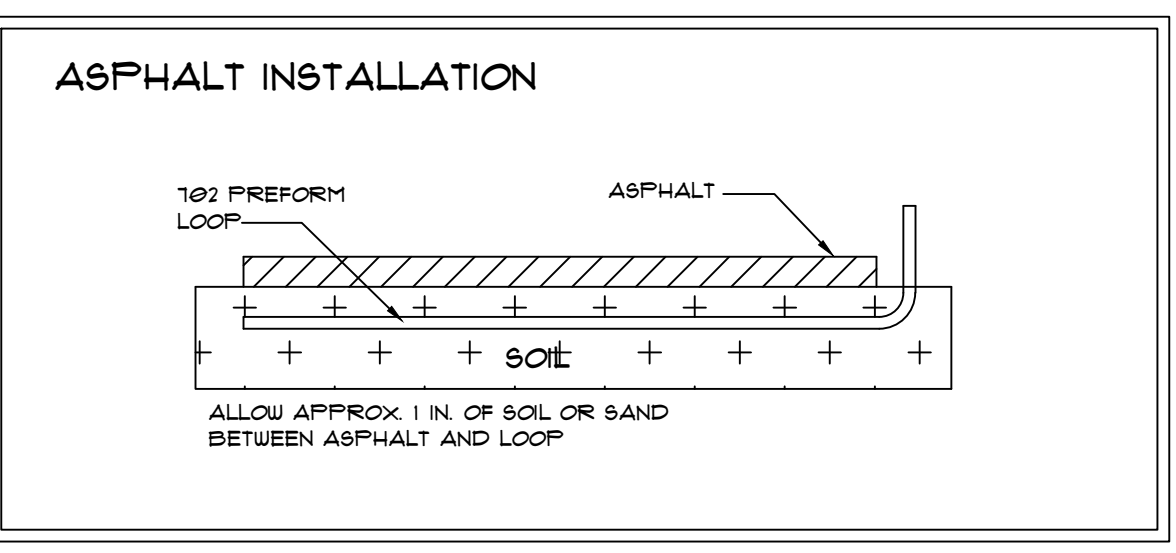
MARK	DATE	DESCRIPTION
NMI 12-19-24		UPDATED PER CURRENT SITE PLAN
DNC 10/07/24		UPDATED PER CURRENT SITE PLAN

ISSUE:	08-01-24
PROJECT NO:	
AUTHOR BY:	DNC
REVIEW BY:	
SHEET TITLE	

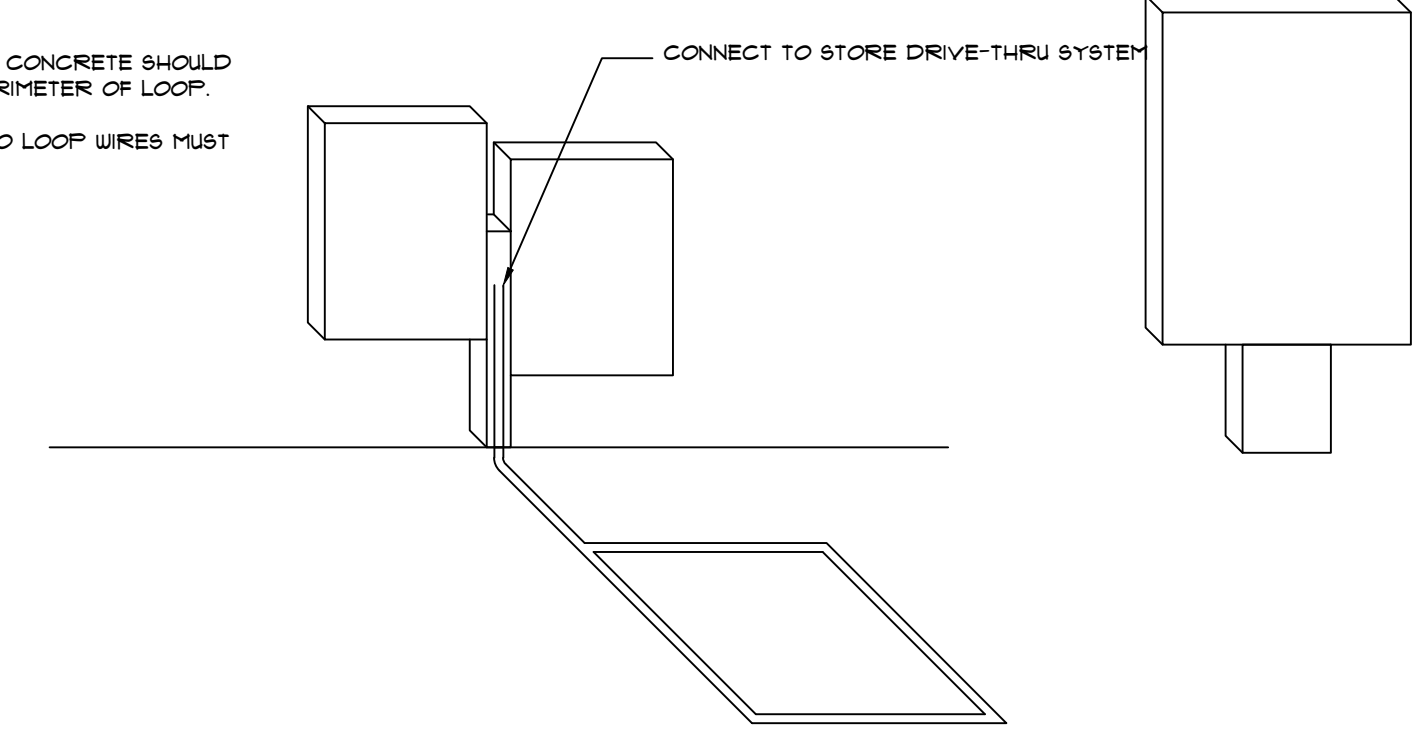
DRIVE THRU
SIGN DETAILS

DT-1

- INSTRUCTIONS
1. POSITION PREFORM LOOP APPROXIMATELY 1'-3" FROM CURB, CENTERED IN FRONT OF THE MENUBOARD OR SPEAKER POST.
 2. LOOP SHOULD BE INSTALLED 2" - 3" BELOW THE SURFACE OF THE PAVEMENT. (5" MAX. DEPTH)
 3. IF INSTALLED IN ASPHALT, COVER LOOP WITH 1" MIN. SOL OR SAND TO PROTECT FROM HOT ASPHALT.
 4. CONNECT LOOP TO 1/2" CONDUIT STUBBING UP IN MENUBOARD/SPEAKER POST.
 5. WIRE MESH OR REINFORCEMENT IN CONCRETE SHOULD BE CUT AWAY IN MIN. OF 6" FROM PERIMETER OF LOOP.
 6. ALL CONNECTIONS AND SPICES TO LOOP WIRES MUST BE SOLDERED.



CONCRETE INSTALLATION
NO SCALE



MENUBOARD W/ SPEAKER POST INSTALLATION
NO SCALE

